



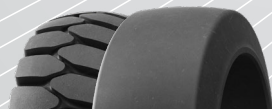
RODACO P2

High quality press-on tire
with excellent value

NATURAL RUBBER COMPOUND

- Provides excellent tire life
- Improves cut and tear resistance
- Lowers vibration transfer

ALSO AVAILABLE IN
NON-MARKING COMPOUND



PRODUCT SPECIFICATIONS



SIZE	PID				OVERALL		LOAD CAPACITY kg [lbs]										
	BLACK		NON MARKING		DIAMETER mm [in.]	WIDTH mm [in.]	COUNTER BALANCED FORKLIFT TRUCKS						OTHER VEHICLES				
	SMOOTH	TRACTION	SMOOTH	TRACTION			UP TO 10 km/h [6 mph]		UP TO 16 km/h [10 mph]		UP TO 25 km/h [16 mph]		UP TO 6 km/h [4 mph]	UP TO 10 km/h [6 mph]	UP TO 16 km/h [10 mph]	UP TO 25 km/h [16 mph]	STATIC
							LOAD WHEEL	STEERING WHEEL	LOAD WHEEL	STEERING WHEEL	LOAD WHEEL	STEERING WHEEL					
10 X 5 X 6 1/2	12.42.18142	-	12.42.18149	-	254	127	1010	830	905	760	735	605	1010	830	725	545	1530
					10.0	5.0	2225	1830	1995	1675	1620	1335	2225	1830	1600	1200	3375
14 X 4 1/2 X 8	12.649.18135	12.712.18099	12.649.18110	-	356	114	1170	960	1045	875	850	695	1170	960	830	625	1760
					14.0	4.5	2580	2115	2305	1930	1875	1530	2580	2115	1830	1380	3880
14 X 5 X 10	12.650.19921	12.464.19925	12.650.19931	-	354	127	1335	1095	1195	1000	970	795	1335	1095	955	715	2020
					13.9	5.0	2945	2415	2635	2205	2140	1755	2945	2415	2105	1575	4455
15 X 5 X 11 1/4	12.604.18136	12.69.19919	12.604.18111	12.69.19929	14.1	5.0	2945	2415	2635	2205	2140	1755	2945	2415	2105	1575	4455
					15.0	5.0	3065	2515	2735	2295	2225	1830	3065	2515	2185	1640	4630
16 X 5 X 10 1/2	12.686.18139	12.713.18102	12.686.18146	12.713.19800	403	127	1510	1240	1345	1130	1095	895	1510	1240	1080	805	2275
					15.9	5.0	3330	2735	2965	2490	2415	1975	3330	2735	2380	1775	5015
16 1/4 X 5 X 11 1/4	12.605.18138	-	12.605.18145	-	413	127	1530	1250	1360	1145	1105	905	1530	1250	1090	815	2300
					16.3	5.0	3375	2755	3000	2525	2435	1995	3375	2755	2405	1795	5070
16 X 6 X 10 1/2	12.603.18131	12.714.18144	12.603.18106	12.714.19795	406	152	1910	1570	1710	1435	1390	1140	1910	1570	1360	1020	2875
					16.0	6.0	4210	3460	3770	3165	3065	2515	4210	3460	3000	2250	6340
16 1/4 X 6 X 11 1/4	12.687.18137	12.716.18100	12.687.18112	12.716.19801	413	152	1920	1580	1715	1440	1395	1140	1920	1580	1370	1025	2890
					16.3	6.0	4235	3485	3780	3175	3075	2515	4235	3485	3020	2260	6370
18 X 6 X 12 1/8	12.607.18132	12.717.18096	12.607.18107	12.717.19796	457	152	2100	1720	1870	1575	1525	1250	2100	1720	1500	1120	3155
					18.0	6.0	4630	3790	4125	3470	3360	2755	4630	3790	3305	2470	6955
18 X 7 X 12 1/8	12.608.18133	12.718.18097	12.608.18108	12.718.19797	457	178	2550	2100	2280	1910	1855	1520	2550	2100	1820	1370	3855
					18.0	7.0	5620	4630	5025	4210	4090	3350	5620	4630	4010	3020	8500
18 X 8 X 12 1/8	12.88.18140	12.719.18103	12.88.18147	-	457	203	3000	2475	2680	2250	2180	1790	3000	2475	2150	1605	4530
					18.0	8.0	6615	5455	5910	4960	4805	3945	6615	5455	4740	3540	9985
21 X 7 X 15	12.609.18130	12.720.18143	12.609.18105	12.720.19798	533	178	2875	2350	2560	2150	2085	1710	2875	2350	2050	1540	4335
					21.0	7.0	6340	5180	5645	4740	4595	3770	6340	5180	4520	3395	9555
21 X 8 X 15	12.99.18134	12.721.18098	12.99.18109	12.721.19802	533	203	3375	2775	3025	2540	2455	2015	3375	2775	2425	1810	5100
					21.0	8.0	7440	6120	6670	5600	5410	4440	7440	6120	5345	3990	11245
22 X 8 X 16	12.111.19923	12.110.19939	12.111.19935	-	556	203	3500	2875	3130	2625	2545	2085	3500	2875	2500	1875	5285
					21.9	8.0	7715	6340	6900	5785	5610	4595	7715	6340	5510	4135	11650
22 X 9 X 16	12.611.18141	12.722.18104	12.611.18148	12.722.19799	559	229	4050	3325	3600	3025	2930	2400	4050	3325	2875	2170	6110
					22.0	9.0	8930	7330	7935	6670	6460	5290	8930	7330	6340	4785	13470
22 X 12 X 16	12.612.19927	12.404.19933	12.612.19937	-	555	305	5625	4625	5030	4225	4090	3350	5625	4625	4025	3020	8515
					21.9	12.0	12400	10195	11090	9315	9015	7385	12400	10195	8875	6660	18770